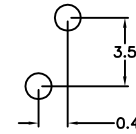
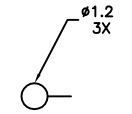
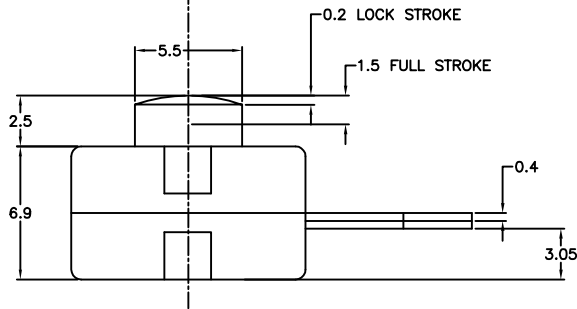
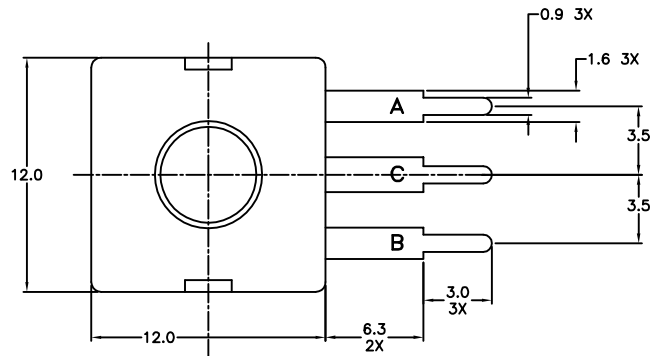
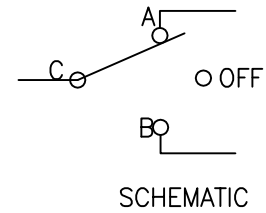
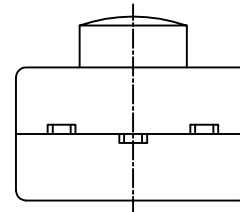


LTR	EN	DESCRIPTION	APPR	BY	DATE
A	-	INITIAL RELEASE	RB	NH	06-25-07
A1	-	ADDED ELECTRICAL RATING 12VDC, 500mA	MT	DC	08-24-12



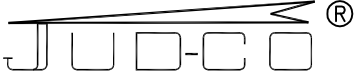
RECOMMENDED MOUNTING PATTERN



JUDCO INVENTORY NO. 50-0063-00  
 SWITCH TYPE: SPDT J977-5 (ON A-OFF-ON C)  
 ELECTRICAL RATING: 12 VDC, 500mA

CUSTOMER:  
 CUSTOMER P/N:  
 APPROVED BY: \_\_\_\_\_  
 DATE: \_\_\_\_\_

DIMENSIONS IN MM TOLERANCES	
.X	±.3
.XX	±.15
DRAWN:	NH 06-25-07
APPR:	KJ 06-25-07
ENGG:	IS 08-24-12
1415U1172A1.DWG	



HARBOR CITY CALIFORNIA  
**MINI FLAT PACK J977-5**  
**W/STRAIGHT TERMS**

DWG. NO.	1415-1172
SHEET	1 OF 1

This document embodies a product, component, and/or design proprietary to JUDCO MANUFACTURING INC., and which is protected either as a trade secret, by U.S. Patent, or by copyright. It may not be used in any way without written express consent of JUDCO MANUFACTURING INC.